



FREESTANDING RESTAURANT BUILDING

1109 E. Santa Fe Street, Olathe, Kansas



SALE PRICE: \$1,400,000 | 5,307 SF BUILDING

DEMOGRAPHICS

	1 mile	3 miles	5 miles
Estimated Population	12,161	95,093	173,590
Avg. Household Income	\$77,105	\$119,385	\$146,714

- Turn key restaurant for sale
- Large parking lot
- Great visibility to Santa Fe Street
- Hood, walk-in refrigerator/freezer, and grease trap
- Large kitchen
- New roof

 [CLICK HERE TO VIEW MORE LISTING INFORMATION](#)

[For More Information Contact:](#)

CARSON ST. CLAIR | 816.412.7306 | cstclair@blockandco.com

DANIEL BROCATO | 816.412.7303 | dbrocato@blockandco.com

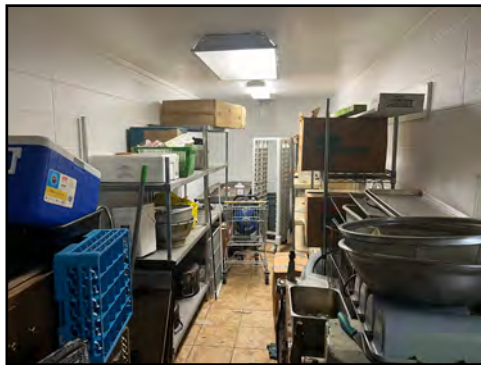
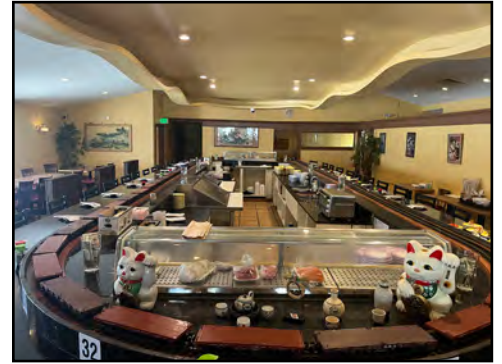
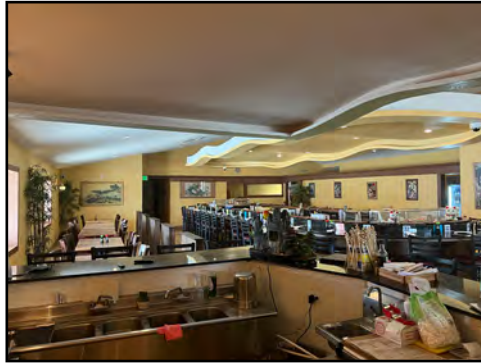
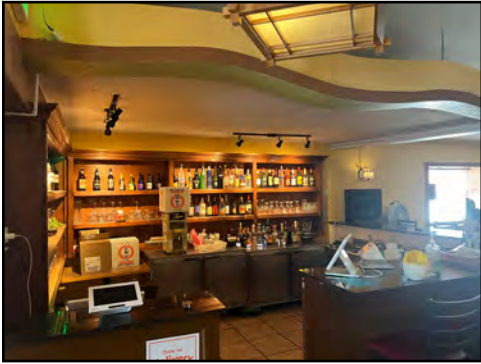
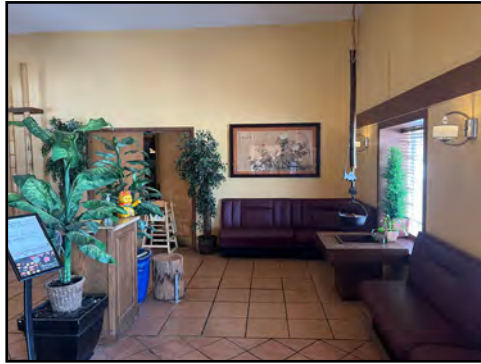
Exclusive Agents



PARKING LOT



PHOTOS

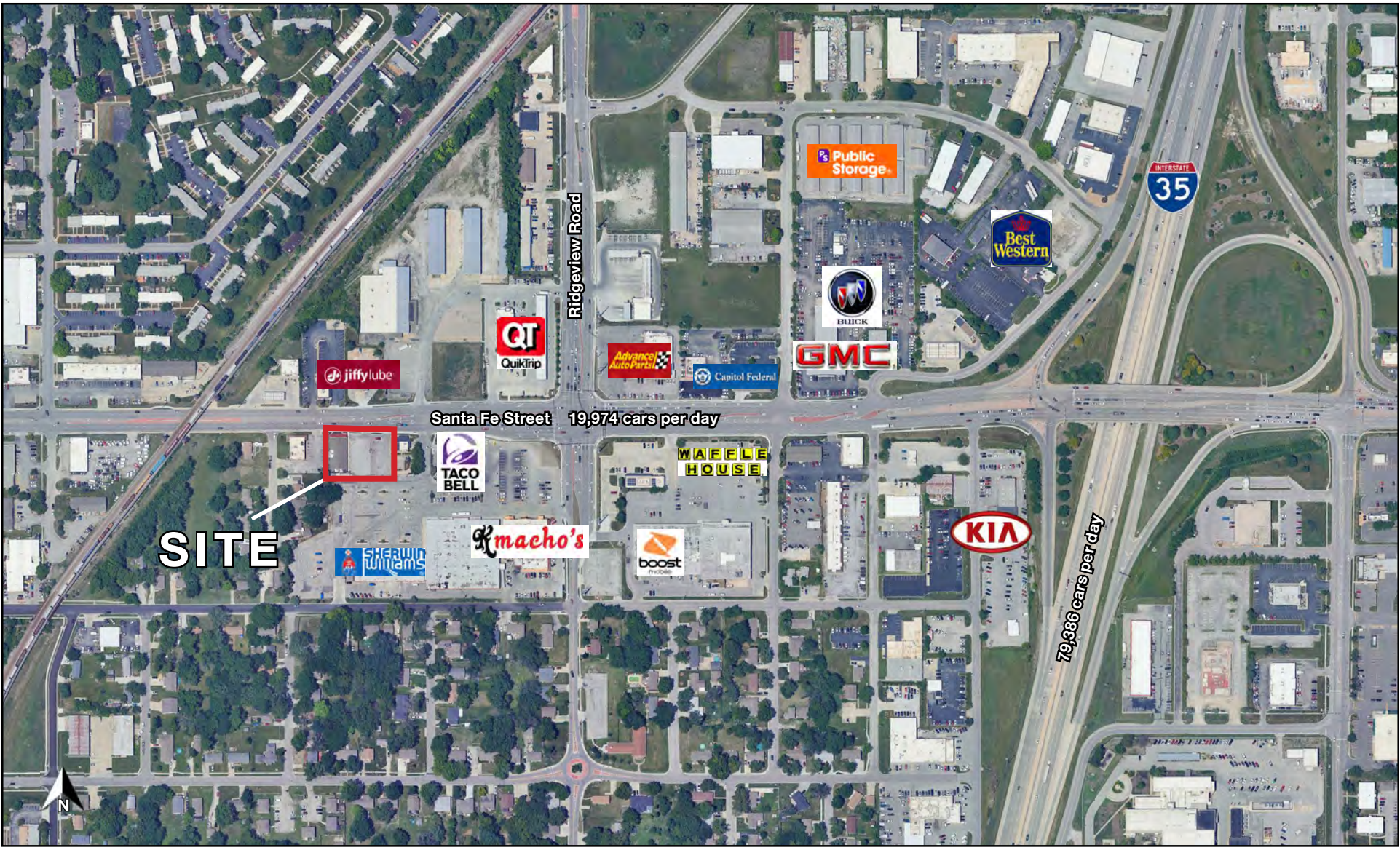




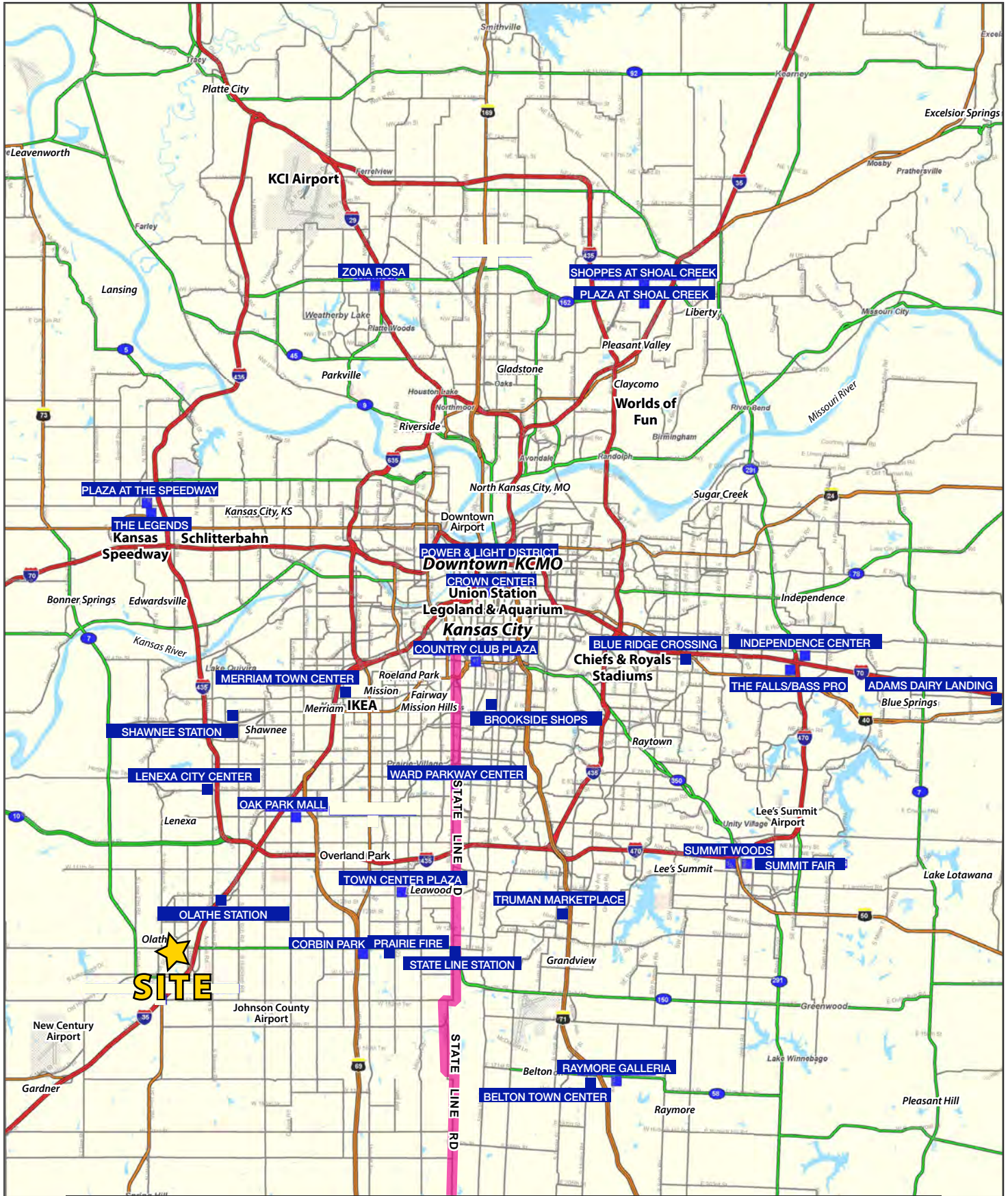
FREESTANDING RESTAURANT BUILDING

1109 E. Santa Fe Street, Olathe, Kansas

AERIAL

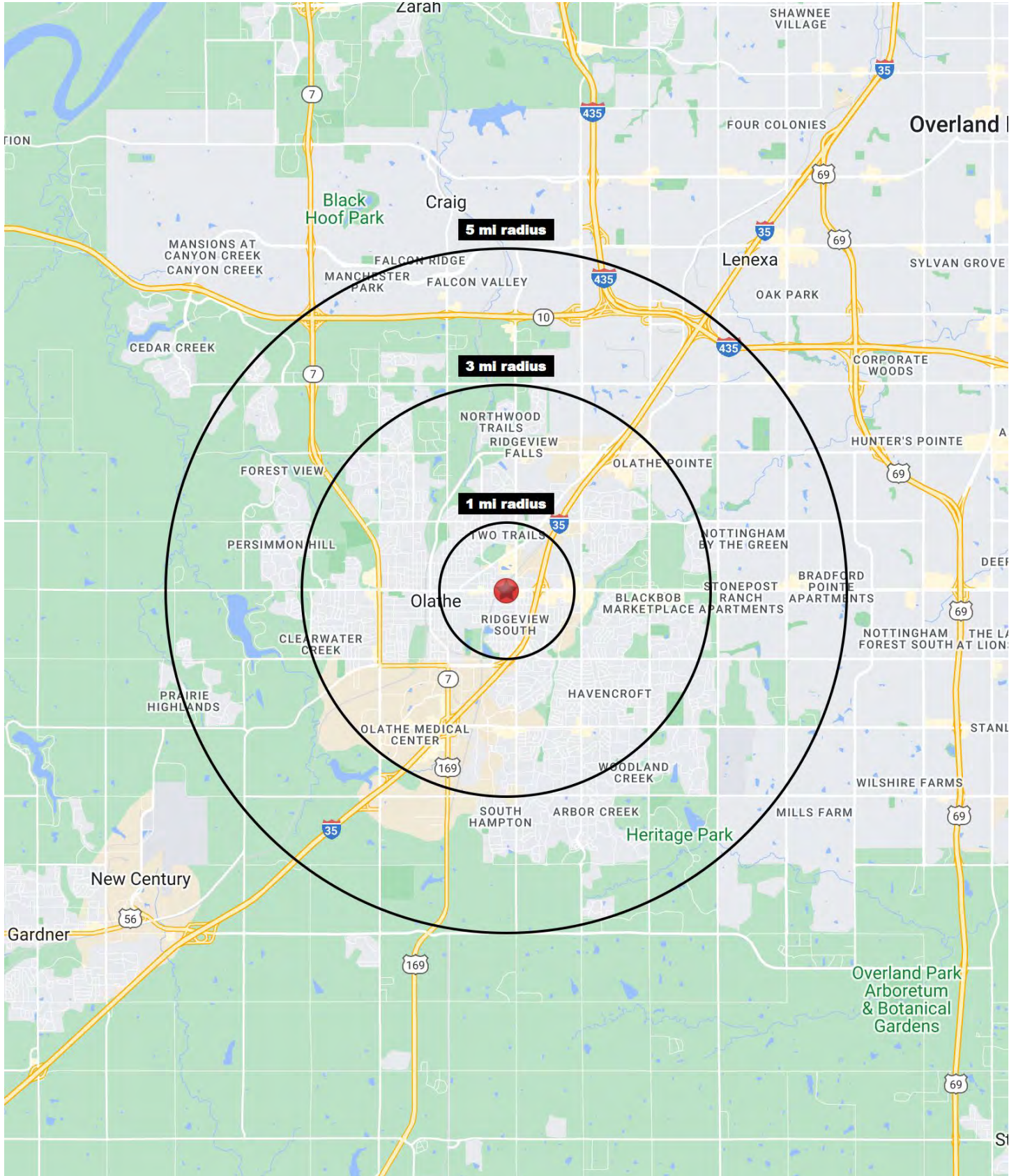


All information furnished regarding property for sale or lease is from sources deemed reliable, but no warranty or representation is made as to the accuracy thereof and the same is subject to errors, omissions, changes of prices, rental or other conditions, prior sale or lease or withdrawal without notice.



FREESTANDING RESTAURANT BUILDING

1109 E. Santa Fe Street, Olathe, Kansas





FREESTANDING RESTAURANT BUILDING

1109 E. Santa Fe Street, Olathe, Kansas

1109 E. Santa Fe Street Olathe, KS 66061	1 mi radius	3 mi radius	5 mi radius
Population			
2024 Estimated Population	12,161	95,093	173,590
2029 Projected Population	12,441	96,924	177,986
2020 Census Population	11,814	94,609	172,992
2010 Census Population	11,775	90,364	152,353
Projected Annual Growth 2024 to 2029	0.5%	0.4%	0.5%
Historical Annual Growth 2010 to 2024	0.2%	0.4%	1.0%
2024 Median Age	32.9	35.6	36.9
Households			
2024 Estimated Households	4,804	35,248	64,684
2029 Projected Households	4,993	36,432	67,024
2020 Census Households	4,484	33,899	62,140
2010 Census Households	4,411	32,249	54,479
Projected Annual Growth 2024 to 2029	0.8%	0.7%	0.7%
Historical Annual Growth 2010 to 2024	0.6%	0.7%	1.3%
Race and Ethnicity			
2024 Estimated White	67.4%	74.3%	77.7%
2024 Estimated Black or African American	8.8%	7.7%	6.3%
2024 Estimated Asian or Pacific Islander	2.2%	4.3%	5.5%
2024 Estimated American Indian or Native Alaskan	0.5%	0.4%	0.3%
2024 Estimated Other Races	21.1%	13.3%	10.1%
2024 Estimated Hispanic	22.0%	13.7%	10.1%
Income			
2024 Estimated Average Household Income	\$77,105	\$119,385	\$146,714
2024 Estimated Median Household Income	\$63,995	\$98,506	\$119,589
2024 Estimated Per Capita Income	\$30,690	\$44,377	\$54,756
Education (Age 25+)			
2024 Estimated Elementary (Grade Level 0 to 8)	4.7%	2.5%	1.5%
2024 Estimated Some High School (Grade Level 9 to 11)	6.2%	3.5%	2.3%
2024 Estimated High School Graduate	22.4%	18.5%	14.5%
2024 Estimated Some College	26.2%	20.8%	18.1%
2024 Estimated Associates Degree Only	9.6%	8.6%	8.1%
2024 Estimated Bachelors Degree Only	20.7%	28.8%	34.0%
2024 Estimated Graduate Degree	10.2%	17.2%	21.5%
Business			
2024 Estimated Total Businesses	521	2,751	5,123
2024 Estimated Total Employees	6,113	39,686	75,198
2024 Estimated Employee Population per Business	11.7	14.4	14.7
2024 Estimated Residential Population per Business	23.4	34.6	33.9

©2024, Sites USA, Chandler, Arizona, 480-491-1112 Demographic Source: Applied Geographic Solutions 5/2024, TIGER Geography - RS1